

UNITED STATES PUBLIC LAND SURVEY CORNER CERTIFICATE FOR

Land survey monuments situated in Section 35, Township 105 North, Range 39 West, of the Fifth Principal Meridian, Murray County, Minnesota..

Previously recorded in N/A in County Recorder's Office.

(Show reason for preparing this certificate, the evidence and detailed procedure used in establishing the corner position & monumentation found or placed.)
 MONUMENT DESCRIPTION AND REMARKS: On June 30, 2011 we dug with backhoe and found 12" stone

1.5' below surface at centerline of Township Road in line with fence west. I accepted stone as corner
& placed a 5/8" Iron Stake with survey cap 23008 over top center of stone. County Highway records
indicated no information for corner. Also set a survey marker spike with 23008 ring at North 1/4 corner
as per MnDot Hwy. 62 plans for accepted corner. In line with fence north.

MURRAY COUNTY COORDINATES NAD 83 (2007) **PLAN-VIEW**

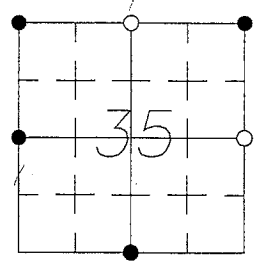
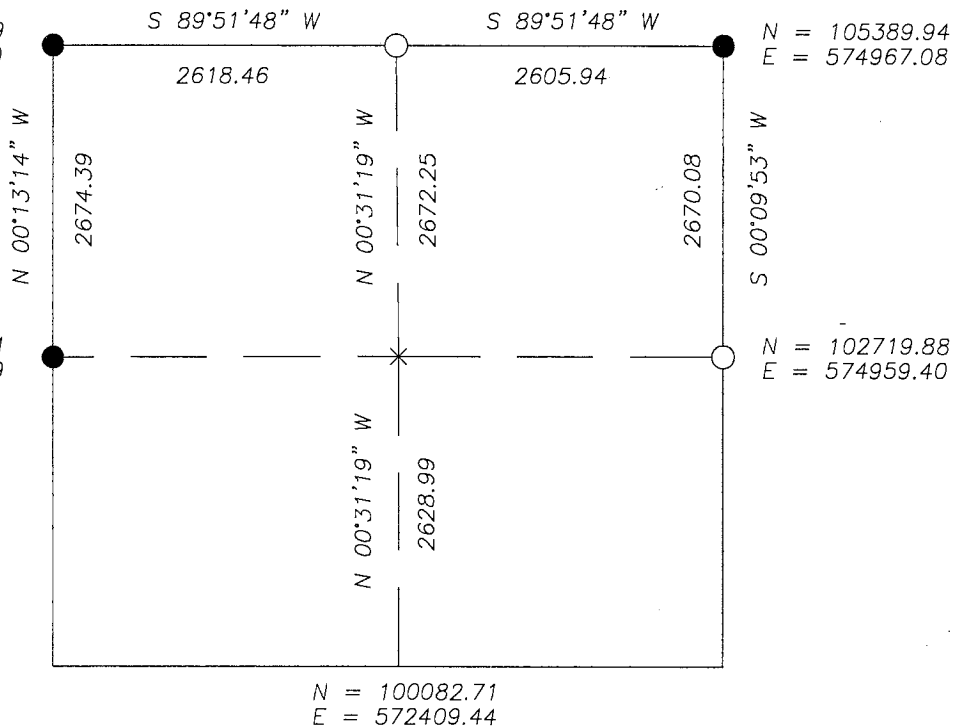
N = 105383.73
 E = 572361.14

N = 105377.49
 E = 569742.70

N = 105389.94
 E = 574967.08

N = 102703.11
 E = 569752.99

N = 102719.88
 E = 574959.40



N = 100082.71
 E = 572409.44



I hereby certify that this land surveying document was prepared and related survey work was performed by me or under my direct supervision and that I am a duly licensed Land Surveyor under the laws of the State of Minnesota.

Perry L. Zieske 7-13-11
 Signature Date
 Perry Zieske
 License number 23008

Corners to be Indexed

Corners	Section	Township	Range
N 1/4	35	105	39
E 1/4	35	105	39

James V. Johnson JUL 18 2011